



*Fredericksburg  
Music Club, Inc.*

Established 1937

*presents*

*Ava Pine*

*Vocalist – 2011 Grammy Nominee*

*January 20, 2013*

*Praised by audiences and critics alike for her “sheer vocal beauty, ease and eloquence” and “rewarding musicianship,” excels in music ranging from Baroque to Contemporary. She draws from a rich well of experience in both classical music and the theatrical stage, which she uses to maximum effect to communicate with her audiences, whether singing opera, oratorio, or giving ...a recital. In her role debut as Pamina with Florentine Opera, she was praised as the production’s “vocal queen ... who sang and acted Pamina with heartbreaking, honeyed sweetness. Her big voice reads as beautiful not only because of its richness, but because she conceals all effort and gets the meaning of the word legato.”*





*Fredericksburg  
Music Club, Inc.*

Established 1937

P.O. Box 1214, Fredericksburg, Texas 78624

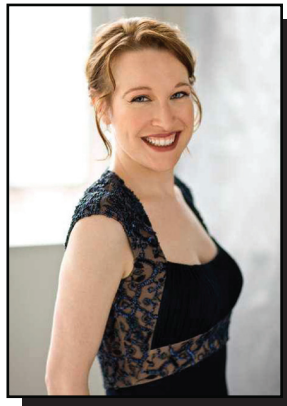
*presents*

*January 20, 2013*

**Ava Pine**

*Vocalist – 2011 Grammy Nominee*

Praised by audiences and critics alike for her “sheer vocal beauty, ease and eloquence” and “rewarding musicianship,” excels in music ranging from Baroque to Contemporary.



Concerts will be held at 3:00 p.m.

Fredericksburg United Methodist Church

1800 N. Llano (Hwy. 16 North) – Fredericksburg, Texas

**No tickets – There is a free will donation basket at the door, all concerts are funded through grants or private and corporate donations through mail, at the door, or through our website.**

**[www.FredericksburgMusicClub.com](http://www.FredericksburgMusicClub.com)**